

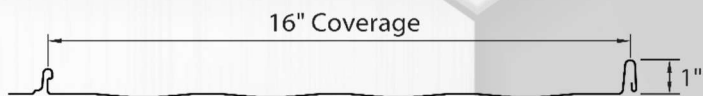
# 1" SNAP LOCK

## 16" COVERAGE – 26GA

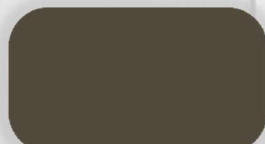
### Concealed Fastener Panel



STANDARD GAUGE: 26GA, 24GA (\*\*Stock in 26 & 24 Gauge)  
SUBSTRATE: AZ-50 GRADE D 50,000 KSI STEEL  
INSTALLATION: SOLID DECKING. MINIMUM SLOPE 3:12  
WARRANTY: 40-YR LIMITED PAINT WARRANTY



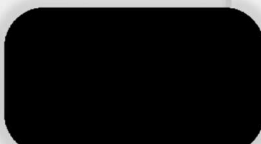
### STANDARD STOCK COLORS



BURNISHED SLATE



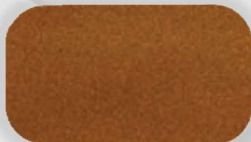
OLD TOWN GRAY



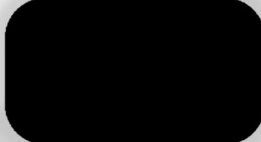
BLACK



CHARCOAL GRAY



COPPER METALLIC



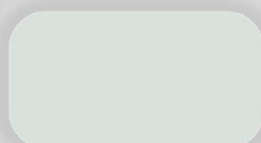
BLACK LOW-GLOSS\*\*  
MATTE FINISH



LIGHT STONE



EVERGREEN



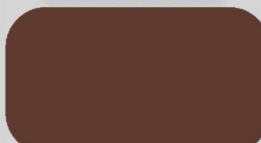
ARCTIC WHITE



LOW-GLOSS TAUPE  
MATTE FINISH



RUSTIC RED



BROWN



GALVALUME

Many more colors available.  
Ask for color availability.  
Minimum order required for some colors.  
\*\*Available in 24ga



### PRE-NOTCHING PANELS

SAVE TIME & MONEY BY HAVING YOUR PANELS  
PRE-NOTCHED FOR HEMMING. ASK FOR DETAILS



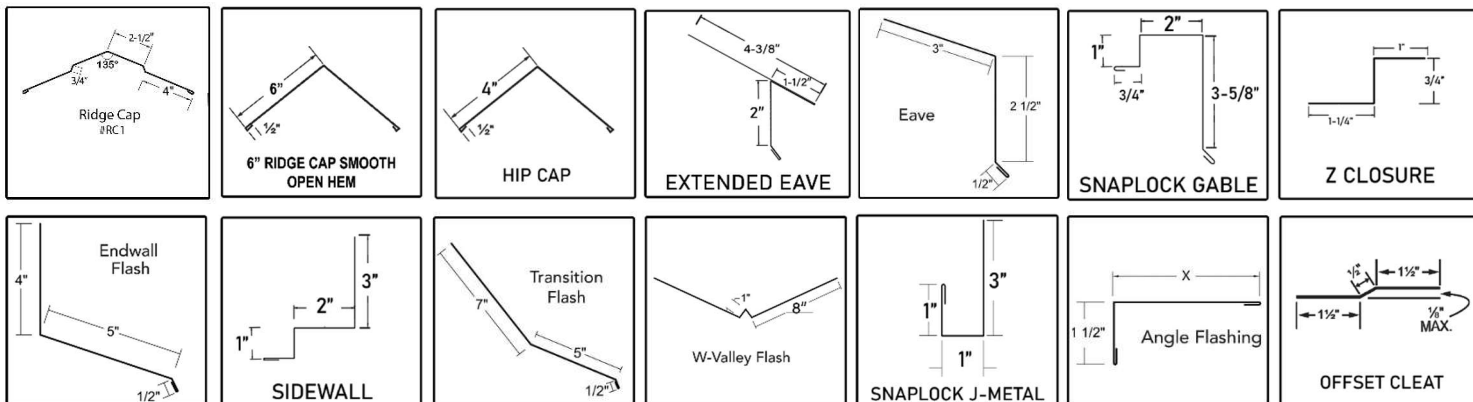
LEHI  
LOGAN

801-768-3332  
435-363-9001

# 1" SNAP LOCK 16" COVERAGE – 26GA W/ STRIATIONS



## STANDARD TRIMS & FLASHINGS



All Trim & Flashing is standard 10'-4" lengths. Custom trims are available – ask sales for details.

## MOBILE METAL ROOFING

Palmer's MetalMart offers Mobile Metal Roofing production. Our Mobile Metal Roofing Roll Former can produce your materials right on site!

Mobile Metal Roofing allows for the maximum lengths to be produced and lowers the risk of damage that may occur during transit.

Ask for details and see if Mobile Metal Roofing makes sense for your next project. (Additional costs apply for service)



**PALMER'S METALMART**  
Your Metal Roofing Source

**LEHI** 801-768-3332  
**LOGAN** 435-363-9001